

CollaborativeCare™

A Value-Based Contracting Model for Primary Care and Outpatient Mental Health Collaboration

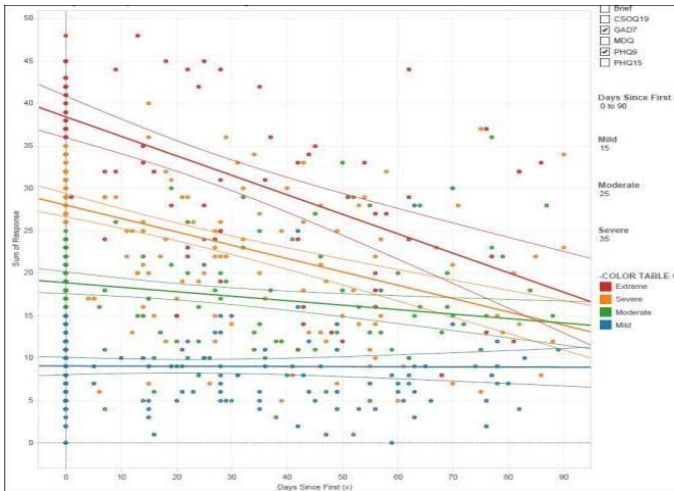
CollaborativeCare™ is a seamless data driven end-to-end online analytic solution that organizations and individual providers can use to find referrals, schedule appointments, create questionnaires, deliver questionnaires electronically, document treatment, coordinate care, and analyze patient experience, progress and outcomes. Standardized cost-benefit measures reveal actionable opportunities and can be used to create conversations among providers.

Provider Dashboard

- ✓ The CollaborativeCare dashboard includes notifications, alerts, and the means to select and schedule questionnaires to be sent.

Visual Analytic System

- ✓ Aggregate data and compare any provider or set of providers to each other (anonymously if required) and filter data viewed by specific questions, questionnaires, and context such as case mix severity, health concerns, scores, diagnosis, gender, age, duration of treatment, and number of appointments.



Charting Progress and Coordination of Care

- ✓ Use multiple population specific patient reported outcome measures (PROM).
- ✓ Create coordinated care documents for patients, physicians and behavioral health professionals.

OPTIONS

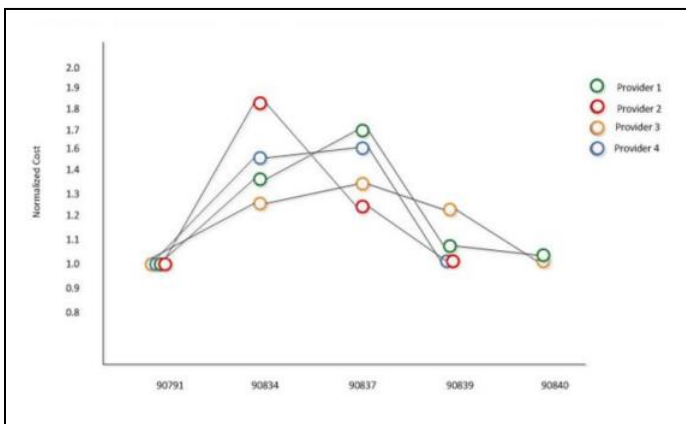
- Patient Info and Consent
- Chart Notes
- Analyze
- Select Questionnaires to Send
- Load Questionnaire Key Code
- Fax History List
- Archive Patient

Questionnaire Status

- Not Sent 0
- Sent 0
- NotComplete 0
- ReadyToView 0
- Viewed 26
- Declined 2

Value Analytics: Standardized Costs and Outcome Measures

- ✓ CollaborativeCare generates basic statistics including a reliable change index, rate of change, and visual displays identifying value by contrasting standardized cost vs effect size.



Patient Name: Mike Renno **Date of Birth:** 10/13/1992

Patient Progress And Coordinated Care Chart Note

Gender: Male **Health Record Number:** 1000011

Provider Name: Test Demo

Primary Diagnosis: F321 - Major depressive disorder, single episode, moderate

Secondary Diagnosis:

Prognosis: Very Good

Patient Status: Stable

Progress: Good

Date of Initial Test: 9/24/2017 **Trendline:** 33.48 %

Global Distress

Note: This patient has been in treatment for approximately 17 weeks. His rate of improvement is

excellent. His initial scores were in the severe range and are now in the low clinical range. He wishes to continue in therapy while reducing his medications. I will continue to see him weekly monitoring his symptom burden so as to ensure it remains subclinical. He will consult with his physician regarding titrating off his antidepressant. At that time I will continue to see him every other week for the next two months. Then monthly for the next several months.

Date Signed: 4/15/2019 **Signed:** Test Demo